



MONTHLY MEMBERSHIP PROGRESS REPORT

District 323E2

Results as of: 7/31/2015

GMT: KAMLESH JAIN

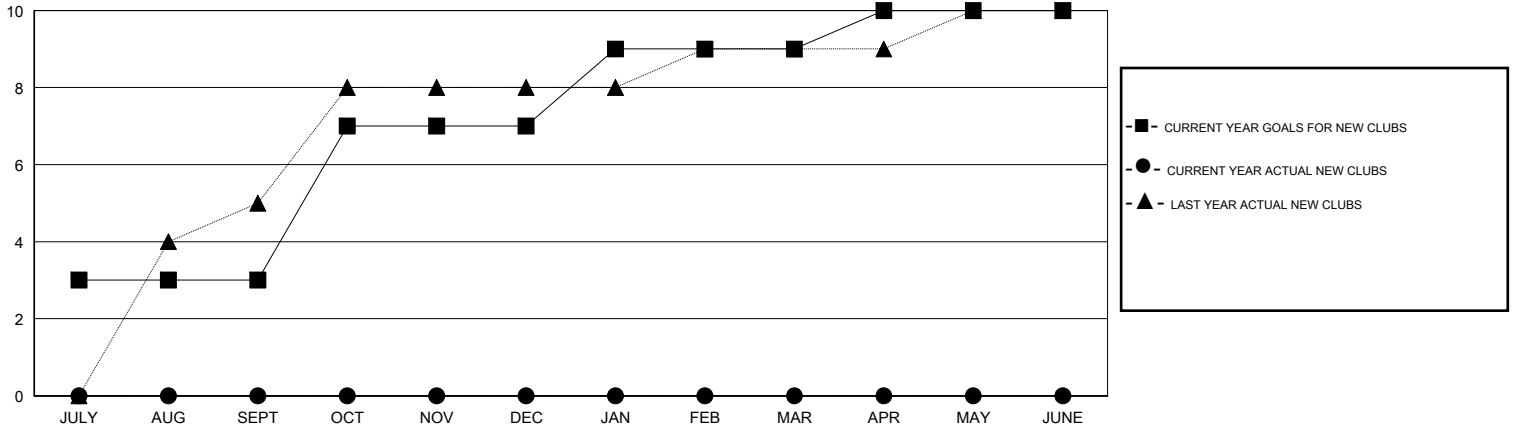
LOCATION INDIA

GMT CA 6

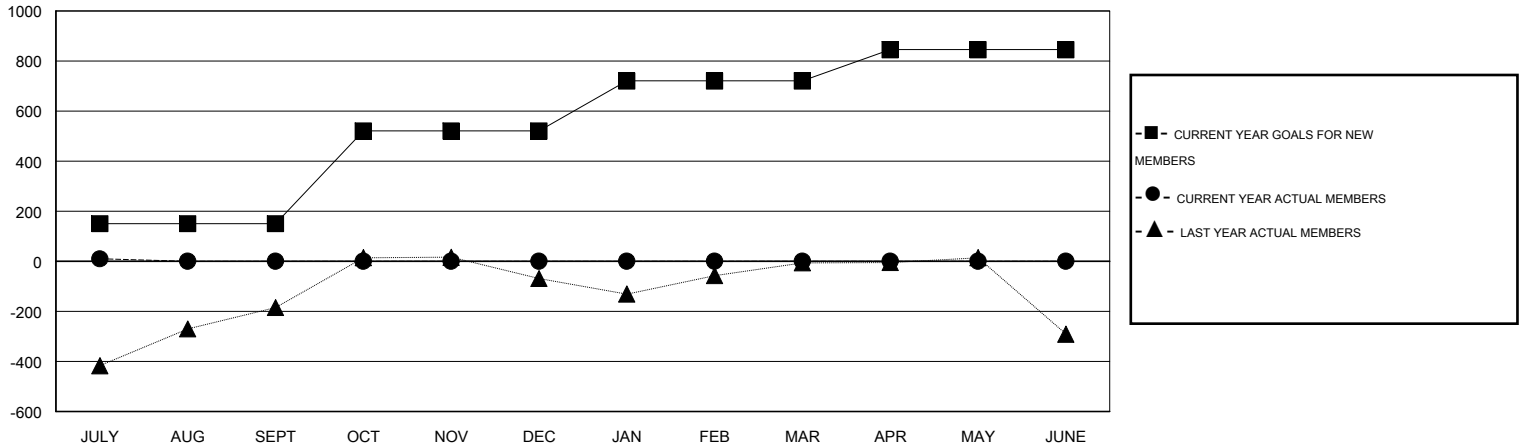
Clubs				
RESULTS FOR 2015-2016				
QUARTER	NEW CLUB GOAL	NEW CLUBS	DROPPED CLUBS	NET GAIN/LOSS
JULY/AUG/SEPT	3	0	0	0
OCT/NOV/DEC	4	0	0	0
JAN/FEB/MAR	2	0	0	0
APR/MAY/JUNE	1	0	0	0

Members				
RESULTS FOR 2015-2016				
QUARTER	NEW MEMBER GOAL	CHARTER AND NEW MEMBERS ADDED	DROPPED MEMBERS	NET GAIN/LOSS
JULY/AUG/SEPT	150	132	122	10
OCT/NOV/DEC	370	0	0	0
JAN/FEB/MAR	200	0	0	0
APR/MAY/JUNE	125	0	0	0

GOALS AND ACTUAL NEW CLUBS CUMULATIVE



GOALS AND ACTUAL MEMBERS CUMULATIVE



DROPPED CLUBS: 0	26 CLUBS OF 130 ADDED 1 OR MORE NEW MEMBERS	<u>GENDER DISTRIBUTION</u>	
<u>DROPPED MEMBERS</u>		MALE	4,478 (83.70%)
DECEASED	1	FEMALE	872 (16.30%)
CLUB CANCELLED	0	FAMILY UNIT MEMBERS 1,457 HEAD OF HOUSEHOLD 682 NON-HEAD OF HOUSEHOLD 775	
OTHER	121		
TOTAL	122		
CLICK HERE FOR HEALTH ASSESSMENT DATA			